



The 19th Koh Samui  
**REGATTA**  
26th - 30th July 2022.  
Banana Fan Sea Resort, Chaweng Beach.

การแข่งขันเรือใบนานาชาติ  
สมุย ริกัตต้า ครั้งที่ 19  
ระหว่างวันที่ 26 - 30 กรกฎาคม พ.ศ. 2565  
ที่ บานาน่าแฟนซี รีสอร์ท หาดฉาง เกาะสมุย



## SAILING INSTRUCTIONS

### Published 26/07/2022

#### 1. RULES

- 1.1 The regatta will be governed by the rules as defined in the Racing Rules of Sailing.
- 1.2 No national authority prescriptions will apply.
- 1.3 If there is a conflict between languages the English text will take precedence.

#### 2. NOTICES TO COMPETITORS

Notices to competitors will be posted on the official notice board located near the dinghy launching area, in-front of Banana Sea Fan Resort

#### 3. CHANGES TO SAILING INSTRUCTIONS

Any changes to the SI will be posted before 09:00 on the day it will take effect, except that any change to the schedule of races will be posted by 18:00 on the day before it will take effect.

#### 4. SIGNALS MADE ASHORE

- 4.1 Signals made ashore will be displayed at the official flagpole located at dinghy launching area.
- 4.2 When a visual signal is displayed over a fleet(s) flag, the signal applies only to that fleet(s). This changes the Race Signals preamble.
- 4.3 [DP] Flag "D" displayed ashore with one sound means: 'the warning signal will be made not less than 30 minutes after flag "D" is displayed.' Boats shall not leave their berthing places until this signal is made.

#### 5. CLASSES

Optimist Boy, Optimist Girl, Divisional Results for U12 (Open) and U10 (Open)  
Open ILCA: ILCA 4 (4.7), ILCA 7 (Standard), ILCA 6 (Radial),  
Open Keelboats

#### 6. SCHEDULE OF RACES

- 6.1 A maximum of 9 races are scheduled for the regatta, with 3 races per day as follows:

Date	Fleet	Registration at Banana Fan Sea, Chaweng Beach	Briefing	First warning Signal
Thu 28 <sup>th</sup> July	All Classes	-	11:30: Coaches Briefing 11:45 Competitors Briefing	13:00 Race 1, then 2, 3
Fri 29 <sup>th</sup> July	All Classes	-	-	10:00 Race 4, then 5, 6
Sat 30 <sup>th</sup> July	All Classes	-	-	10:00 Race 7, then 8,9
Sat 30 <sup>th</sup> July	Prize Giving	18:00 Prize Giving at Banana Fan Sea		

- 6.2 One extra race per day may be sailed, provided that no class becomes more than one race ahead of schedule and the change is made according to SI 3.
- 6.3 On the last scheduled day of racing no warning signal will be made after 15:00.

## 7. CLASS FLAGS

Optimist Boy, Optimist Girl: **Optimist Class Flag**

ILCA 4 (4.7), ILCA 6 (Radial), ILCA 7 (Standard) : **ILCA Class Flag**

Open Skiff: **Class Flag**

Open Keelboats: **Pink Flag**

## 8. RACING AREA

The racing area is off Chaweng Beach. **See Appendix B.**

## 9. THE COURSES

9.1 The diagrams in Appendix A show the courses, the order in which marks are to be passed, and the side on which each mark is to be left.

9.2 The Intended Courses for each day will be posted on the Official Notice Board before 09.00

9.3 The course assignment to the class will be displayed on a board on the side of race-committee boat at the starting line on or before their warning signal.

## 10. MARKS

10.1 Mark 1, 4 will be Cubes. Mark 2 and 3 will be Triangles, 1A and 2A will be Yellow Cylinders.

10.2 The starting marks will be race-committee boat and an orange/white mark.

10.3 The finishing marks will be race-committee boat and an Orange/White or Black/White mark.

10.4 New marks, as provided in instruction 12 will be Yellow Cylinders.

10.5 The waiting area will be 50 meters behind the starting line.

## 11. THE START

11.1 Races will be started by using RRS 26 with the warning signal made 5 minutes before the starting signal.

11.2 The starting line will be between a staff displaying an orange flag on starting mark at the starboard end and the course side of a port end starting mark.

11.3 A boat that does not start within two (2) minutes after her starting signal will be scored DNS without a hearing. This changes RRS A4 and A5.

11.4 [DP] Boats whose warning signal has not been made shall avoid the starting area during the starting sequence for other races.

11.5 To alert boats that a race or sequence of races will begin soon, the orange flag defining the starboard end of the starting line will be displayed with one sound at least five minutes before a warning signal is displayed.

## 12. CHANGE OF THE NEXT LEG OF THE COURSE

12.1 To change the next leg of the course, the race committee will lay a new mark (or move the finishing line) and remove the original mark as soon as practicable. When in a subsequent change a new mark is replaced, it will be replaced by an original mark.

12.2 Except at a gate, boats shall pass between the race committee vessel signaling the change of the next leg and the nearby mark, leaving the mark to port and the race committee vessel to starboard. This changes rule 28.

## 13. THE FINISH

The finishing line will be between a staff displaying a Blue flag on the finishing mark at the starboard end and the course side of a port end finishing mark.

## 14. PENALTY SYSTEM

RRS Appendix P will apply. RRS P2.3 will not apply and RRS P2.2 is changed so that it will apply to any penalty after the first one.

## 15. TIME LIMITS

15.1 Time limits and target times are as follows:

CLASS	TIME LIMIT	MARK 1 TIME LIMIT	FINISH WINDOW	TARGET TIME
OPTIMIST	70	30	20	50
ILCA 4,6,7,	70	25	15	50
Open Skiff	70	25	15	50

15.2 Failure to meet the target time will not be grounds for redress. This changes rule 62.1(a).

15.3 If no boat rounds Mark 1 within the MARK 1 TIME LIMIT, the race committee shall abandon the race.

15.4 Any boat that does not finish within the FINISH WINDOW (time after the first boat finishes) shall be scored DNF without a hearing. This changes RRS 63.1 and A5.

15.5 Keelboats will have an absolute daily time limit of 16:00.

## 16. PROTESTS AND REQUESTS FOR REDRESS

16.1 A Remote Jury with local based chairman, will be appointed in accordance with rule RRS 91(b).

16.2 Protest forms are available at the race office and from the desk at the boat launch area.

Protests and requests for redress or reopening shall be delivered there within the appropriate time limit.

16.3 For each class, the protest time limit is 60 minutes after the last boat has finished the last race of the day or the race committee signal no more racing today, whichever is later.

16.4 Notices will be posted no later than 30 minutes after the protest time limit to inform competitors of hearings in which they are parties or named as witnesses. Hearings will be held in the Protest Room at Banana Fan Sea Resort.

16.5 Notices of protests by the race committee, technical committee or protest committee will be posted to inform boats under RRS 61.1(b).

16.6 A list of boats that, under SI 14, have been penalized for breaking RRS 42 will be posted.

16.7 Breaches of SIs 11.4, 18, 19, 20, 21 and 22 will not be grounds for a protest by a boat. This changes RRS 60.1(a). 16.8 On the last scheduled day of racing a request for redress based on a protest committee decision shall be delivered no later than 30 minutes after the decision was posted. This changes RRS 62.2.

16.9 [DP] The penalty for a breach of the class rules or rules in the NOR and SIs, may, at the discretion of the protest committee be less than disqualification.

16.10 To request correction of an alleged error in posted race or series results, a competitor may complete a Scoring Review Form available at Race Office.

## 17. SCORING

17.1 Three (3) races are required to be completed to constitute a series.

17.2 When fewer than 5 races have been completed, a boat's series score will be the total of her race scores.

17.3 When from 5 to 9 races have been completed, a boat's series score will be the total of her race scores excluding her worst score.

## 18. SAFETY REGULATIONS

18.1 Sign-Out and Sign-In Procedure. The requirements of this instruction are specified for the safety of the competitors. The control point to Sign-Out and Sign-In is located near the official notice board.

18.2 Each competitor shall individually Sign-Out each day before racing, beginning one hours before the scheduled warning for the day.

18.3 Each competitor shall individually Sign-In after racing immediately upon returning to shore, but no later than the protest time limit.

18.4 A standard penalty of one point in the first race of the day shall be imposed without a hearing on competitors for failure to comply with SI 18.2.

18.5 A standard penalty of one point in the last race of the day shall be imposed without a hearing on competitors for failure to comply with SI 18.3.

18.6 [DP] A boat retiring from a race shall notify a race committee or safety boat before leaving the course.

#### **19. REPLACEMENT OR CREW OR EQUIPMENT**

19.1 Substitution of competitors will not be allowed without prior written approval of the race committee.

19.2 Substitution of damaged or lost equipment will not be allowed unless authorized by the race committee. Request for substitution shall be made to the committee at the first reasonable opportunity.

#### **20. OFFICIAL BOATS IDENTIFICATION**

20.1 [NP] Race committee boats will display "Race Committee" flag.

#### **21. SUPPORT BOATS**

21.1 [DP] Team leaders, coaches and other support persons shall stay outside areas where boats are racing from the time of the preparatory signal for the first class to start until all boats have finished or retired or the race committee signals a postponement, general recall or abandonment.

21.2 The area where boats are racing is defined as 50 meters on non-course side of the starting and finishing lines and 100 meters from all rounding marks.

#### **22. CHARTER BOATS**

22.1 Competitors sailing on charter boats shall report any damage or loss of equipment, however slight, to the organizing authority's representative immediately after securing the boat ashore.

22.2 Failure or loss of chartered equipment will not be grounds for a request for redress. This changes RRS 62.1(a).

22.3 Hulls, foils and spars of chartered and non-chartered equipment may be cleaned but only with water.

#### **23. TRASH DISPOSAL**

Trash may be placed aboard support and race committee boats.

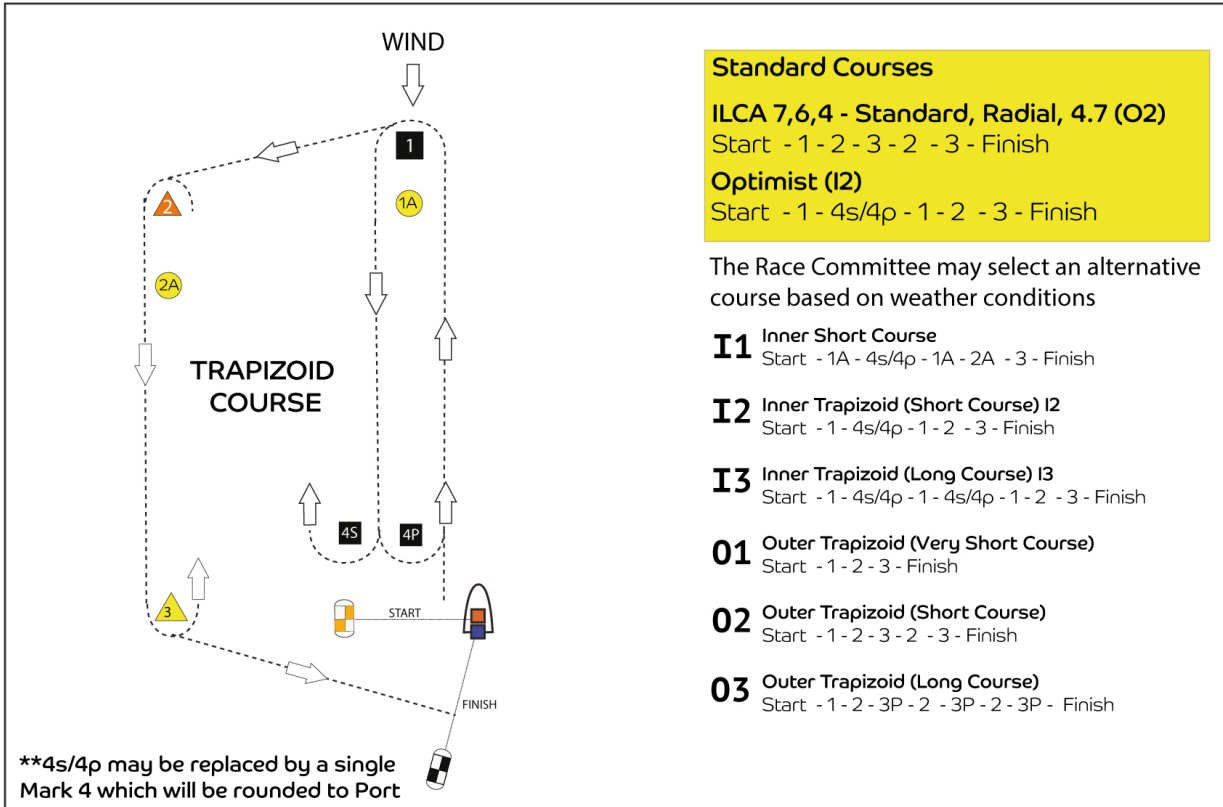
#### **24. RADIO COMMUNICATION**

[DP] Except in an emergency, a boat that is racing shall not make voice or data transmissions and shall not receive voice or data communication that is not available to all boats.

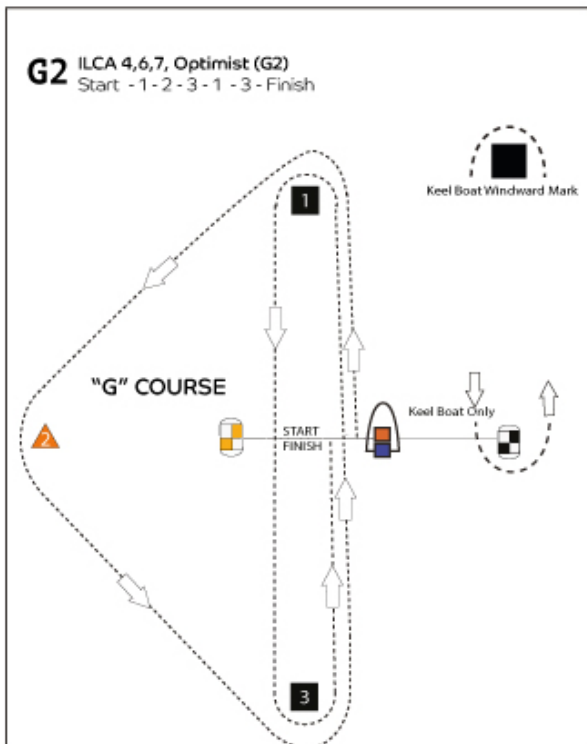
#### **25. DISCLAIMER OF LIABILITY**

Competitors participate in the event entirely at their own risk. See RRS 3, Decision to Race. The organising authority will not accept any liability for material damage or personal injury or death sustained in conjunction with or prior to, during, or after the regatta.

## APPENDIX A – Trapezoid Course



## APPENDIX A – COURSE G2 + Keelboats



**Keel Boat Courses will be announced by VHF Channel 77**

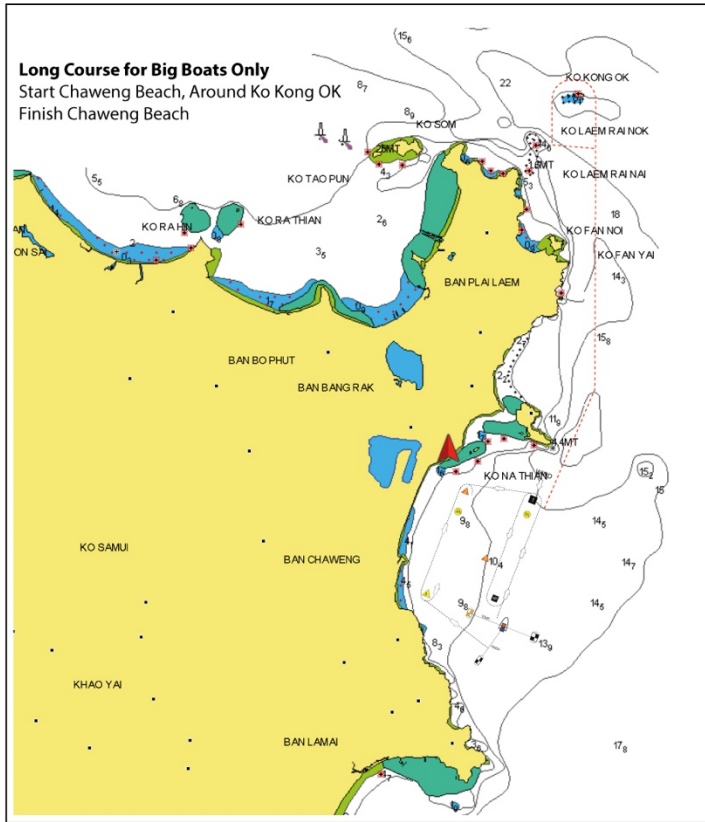
**5 Keelboat W/L Courses**  
Start - Round Keel Boat Windward to Port  
Round Keel Boat Finish Pin to Port  
Round Keel Boat Windward Mark to Port  
Finish (Committee Boat to Starboard)

**6 Keelboat Coastal Courses**  
Start - Round Keel Boat Windward to Starboard  
Round (Described Marks - See Below)  
Round Keel Boat Windward Mark to Port  
Finish (Committee Boat to Starboard)

**Described Marks:**

A. Hin Ang Wan Cardinal (Round to Port)  
B. Ko Kong OK (Round to Port)  
C. Ko Kong OK (Round to Port),  
Ko Lum Mu Noi (Outer Light to Port),  
Ko Kong Ok (Round to Starboard)

# APPENDIX B – RACING AREA



**Samui Regatta**  
**2022**

The 19th Koh Samui  
**REGATTA**  
 26th - 30th July 2022  
 Chaweng Beach, Koh Samui, Thailand.

